

HIPERWALL

see the big picture



Tilford 405 Start-Up Guide



Control Panel and Hiperwall Control Computer

The Control Computer on the left is for Room Power and Hiperwall control. This computer should remain on all the time but should you need to start or re-boot it, it will log-in automatically so you will not have to. There are two types of software on this computer which you will need to use. First, is the **Control Panel** which controls lights, shades and display power. The 2nd is the **Hiperwall Controller** software which controls how you use the main display wall and mobile displays.

Classroom PC (PowerPoint, Web, DVD)

The Right Computer is the classroom computer. You can log into to it with your Gonzaga Username and Password. You will access to:

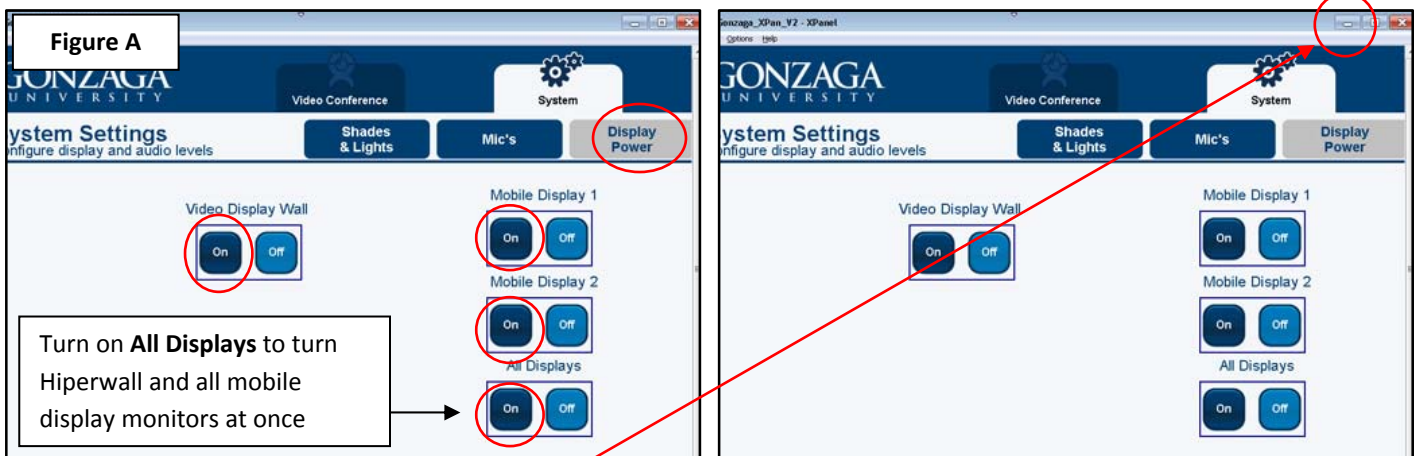
- Your Personal Share Drive
- Microsoft Office
- Internet Web Browser
- DVD playback through computer DVD Drive

1) Log in to **Classroom PC** on right first with your Gonzaga username and password. This will log you in and automatically launch the *streamer app* to send the computer display to the Hiperwall. You will see 2 small windows open up. Keep them open but minimize them to remove them from view.

2) Open up the **Control Panel** on the Control PC on left. The control PC operates the power, shades and display functions of the room and Hiperwall using a software interface.



3) Select Display Power tab. Click “on” to power on individual displays or click “on” “All Displays” to turn on the main wall and all mobile displays **see figure (a).**



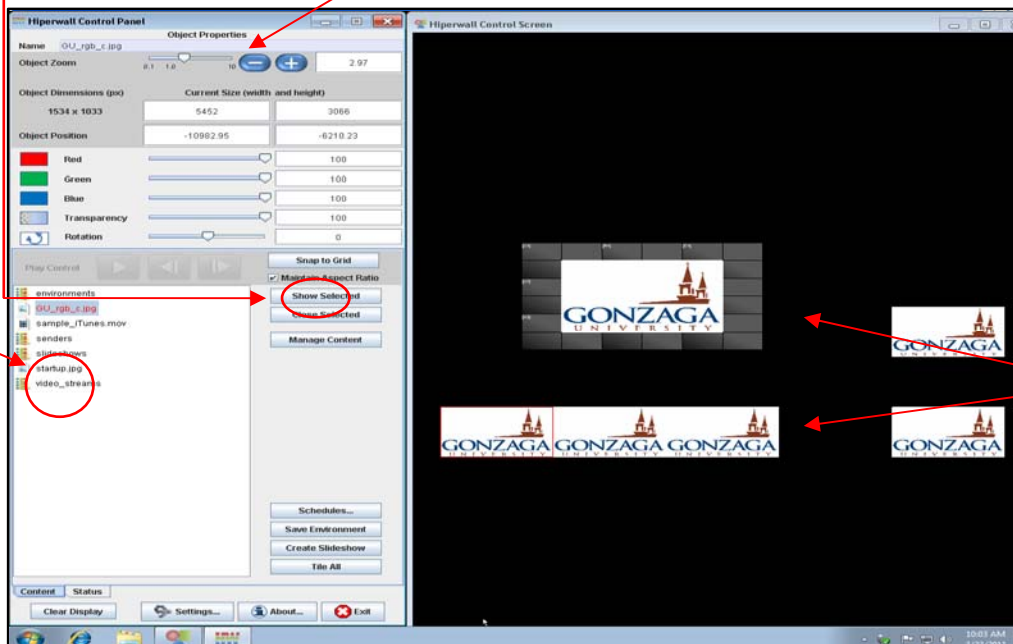
9) Minimize the Control Panel

10) On the Control Computer Desktop, click on Hiperwall Controller icon to launch Hiperwall software.



11) Select video streams folder and “Class-Streaming-Media PC”

12) Select “show selected. Now you may have to size your desktop image to get it to your liking. Use “Object Zoom” slider to resize image. To add more images for mobile displays, click on “Show Selected” again.



The Control Screen window allows you to select senders, display sources, adjust size, adjust color and load and save environments.

The Display Screen window shows you the layout of the display Hiperwall and the mobile displays located in the room. In this window you can resize and position sources you want to display.

NOTE: If you have any Hiperwall issues such as image not showing up or one of the 9 Hiperwall panels not displaying, click on “Exit” at bottom of Hiperwall application to exit and then reopen it. If this does not work, reboot the Control PC.