

What is Strattera?

- ✚ The first non-stimulant prescription medication approved by the FDA for treating Attention Deficit Hyperactivity Disorder (ADHD) in children, adolescents, and adults
- ✚ A norepinephrine reuptake inhibitor that works differently than other ADHD medications
- ✚ A non-controlled medication, which allows your health care provider to phone-in refills

What are the symptoms of ADHD?

- ✚ Lack of attention
- ✚ Daydreaming
- ✚ Forgetfulness
- ✚ Lack of motivation
- ✚ Difficulty learning new things or staying on task



Other information:

- ✚ Strattera is available in several dosages: 10, 18, 25, 40, and 60 mg
- ✚ Strattera has not been studied in children under six years old
- ✚ Strattera should be stored at room temperature
- ✚ Keep all medications, including Strattera, out of reach of children
- ✚ Contact your health care provider before starting on any new medications (especially antidepressants)
- ✚ Stop taking Strattera immediately and contact your health care provider if you develop any symptoms of an allergic reaction (such as swelling or hives)
- ✚ Call your health care provider immediately if more than the prescribed amount of Strattera is taken

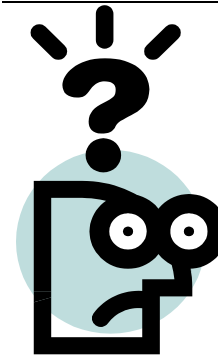
For more information, go to

Lilly
www.strattera.com

Created by Katie Weller, RN

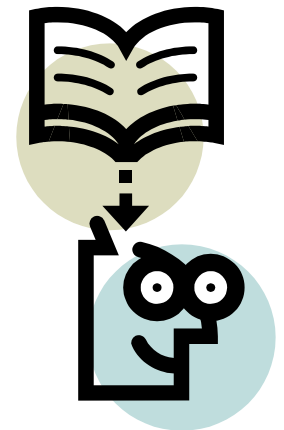
STRATTERA

(pronounced stra-TAIR-a)
(atomoxetine HCl)




Do you feel your behavior is always hyperactive, inattentive, and impulsive?

Are you ready to be able to concentrate, retain information, and help yourself succeed?




Keep reading to see if Strattera is right for you.


How does Strattera work?

- ✚ It blocks and slows the reabsorption of norepinephrine (a chemical neurotransmitter)
- ✚ This keeps more norepinephrine at work in the tiny spaces between neurons in the brain 
- ✚ With ADHD treatment, this is important in regulating attention, impulsivity, and activity levels

How is Strattera taken?

- ✚ According to your health care provider's instructions
- ✚ Orally, with or without food
- ✚ Usually one or two times a day (at the same time every day to form a schedule)
- ✚ Capsules must be taken whole (never break them) 

What are the side effects associated with Strattera?


- ✚ Decreased appetite (12%)
- ✚ Nausea, vomiting, constipation (7%)
- ✚ Problems urinating (7%)
- ✚ Dizziness (6%)
- ✚ Tiredness (4%) 
- ✚ Sexual dysfunction (4%)
- ✚ Mood swings (2%)

You should not take Strattera, if you:

- ✚ Are taking a monoamine oxidase inhibitor (MAOI) or have stopped taking a MAOI in the past fourteen days—this combination can cause serious side effects or even be life-threatening
- ✚ Are allergic to atomoxetine or any of the other ingredients in Strattera

- ✚ Have narrow angle glaucoma
- ✚ Have high blood pressure, low blood pressure, increased heart rate, or any heart or blood vessel disease (doses need adjusted in these situations)
- ✚ Are a female who is nursing, pregnant, or could possibly become pregnant

What will be monitored while you are on Strattera?

- ✚ Growth 
- ✚ Weight loss
- ✚ ADHD symptoms
- ✚ All other medications that you are taking (including over-the-counter medications, dietary supplements, and herbal remedies)
- ✚ Routine laboratory tests are not required for people taking Strattera